

# Why is it so difficult to connect users to data?

Alan H Smith  
Luchelan Limited

# Agenda

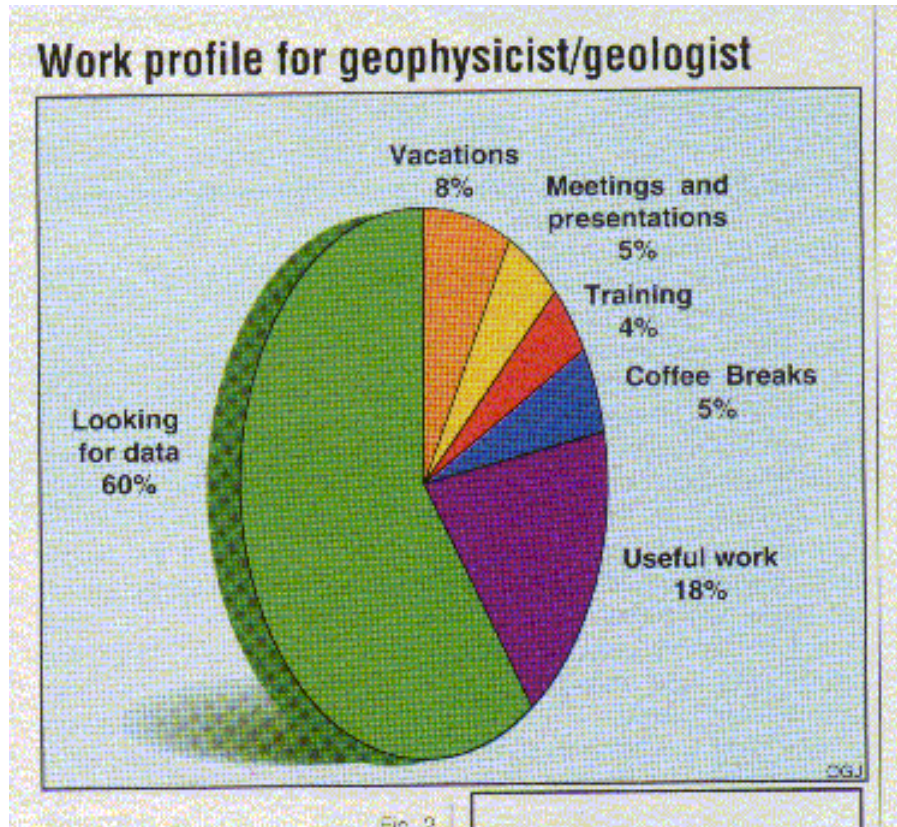
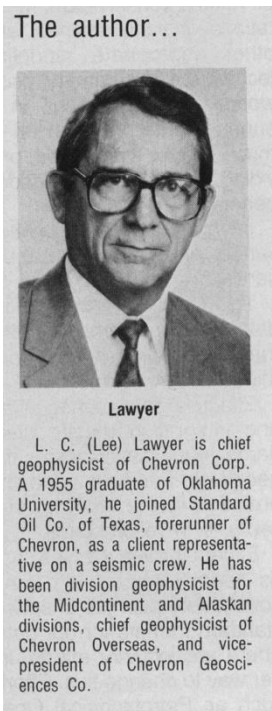
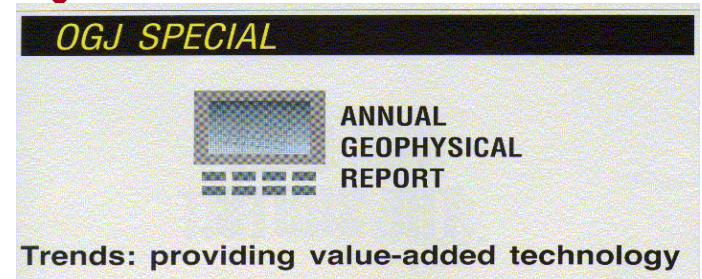
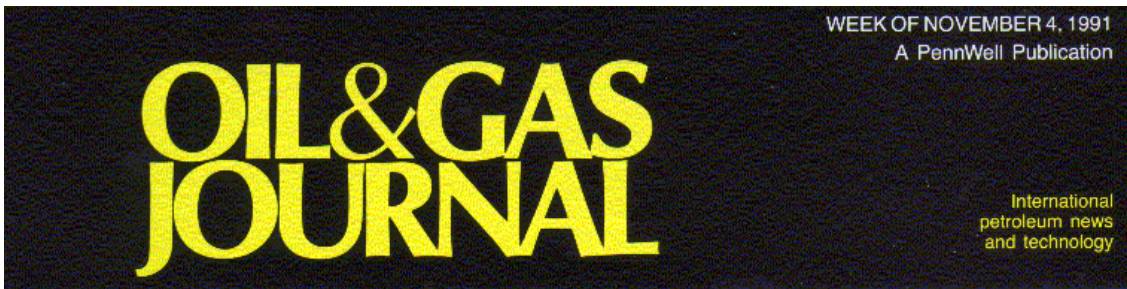
- Introduction
- Delivering data to the user – a brief history
- Moving to the internet age
- Example - MultiClient seismic data
- Where next?

# Agenda

- **Introduction**
- Delivering data to the user – a brief history
- Moving to the internet age
- Example - MultiClient seismic data
- Where next?



## Status in 1991?



# Agenda

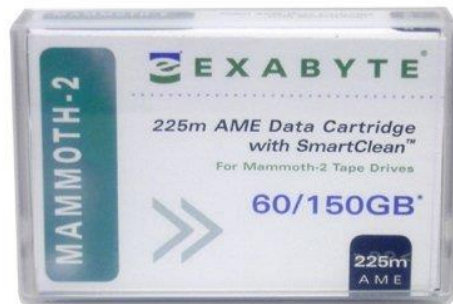
- Introduction
- Delivering data to the user – a brief history
- Moving to the internet age
- Example - MultiClient seismic data
- Where next?



# Technology in the 90s



# Data delivery in 1990's



**SUN Ultra 2  
(SPARC)**



**SGI Octane  
(MIPS)**



**IBM RS/6000  
(POWER)**



**DEC Digital Personal Workstation  
(Alpha)**



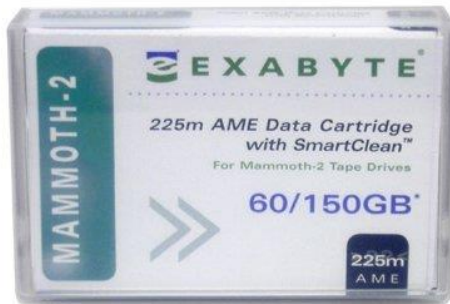
**HP 9000/712  
(PA-RISC)**

# Technology about 2005





# Data delivery in 2000's



# Technology from ~2015



# Modern Data Delivery

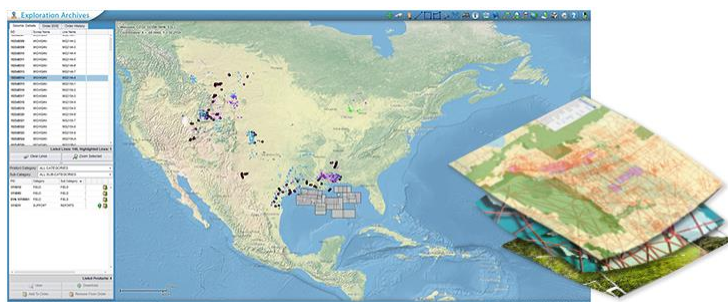
```
THE GOPHER PROJECT

Welcome to The Gopher Project! Gopher is a slim, powerful, and
fast way to present information in a hierarchial catalog online.
Gopher actually predates the Web -- although most web browsers
make excellent gopher browsers too.

Good places to start are the "Why Gopher?" and "Using Gopher"
areas!

[12] A Brief Introduction to Gopherspace
[13] Clients, Servers, and Downloads/
--> [14] Mailing List
    [15] Mailing List Archives/
    [16] Using Gopher/
    [17] Why Gopher?/

Press F for Help, Q to Quit, M to go up a menu Page: 1
```



Shared data solutions  
for the UK offshore oil industry



NORWEGIAN PETROLEUM DATA

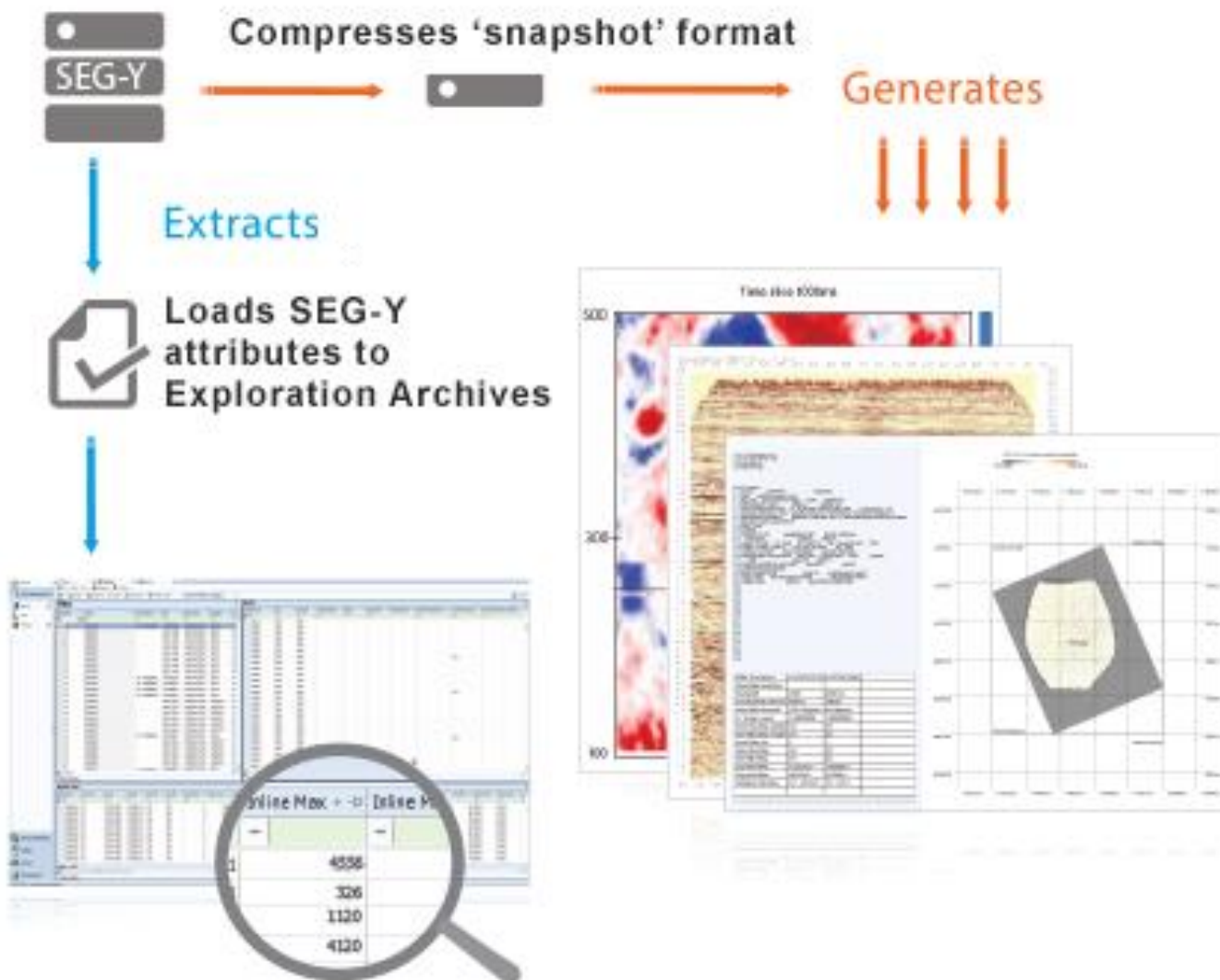


# Agenda

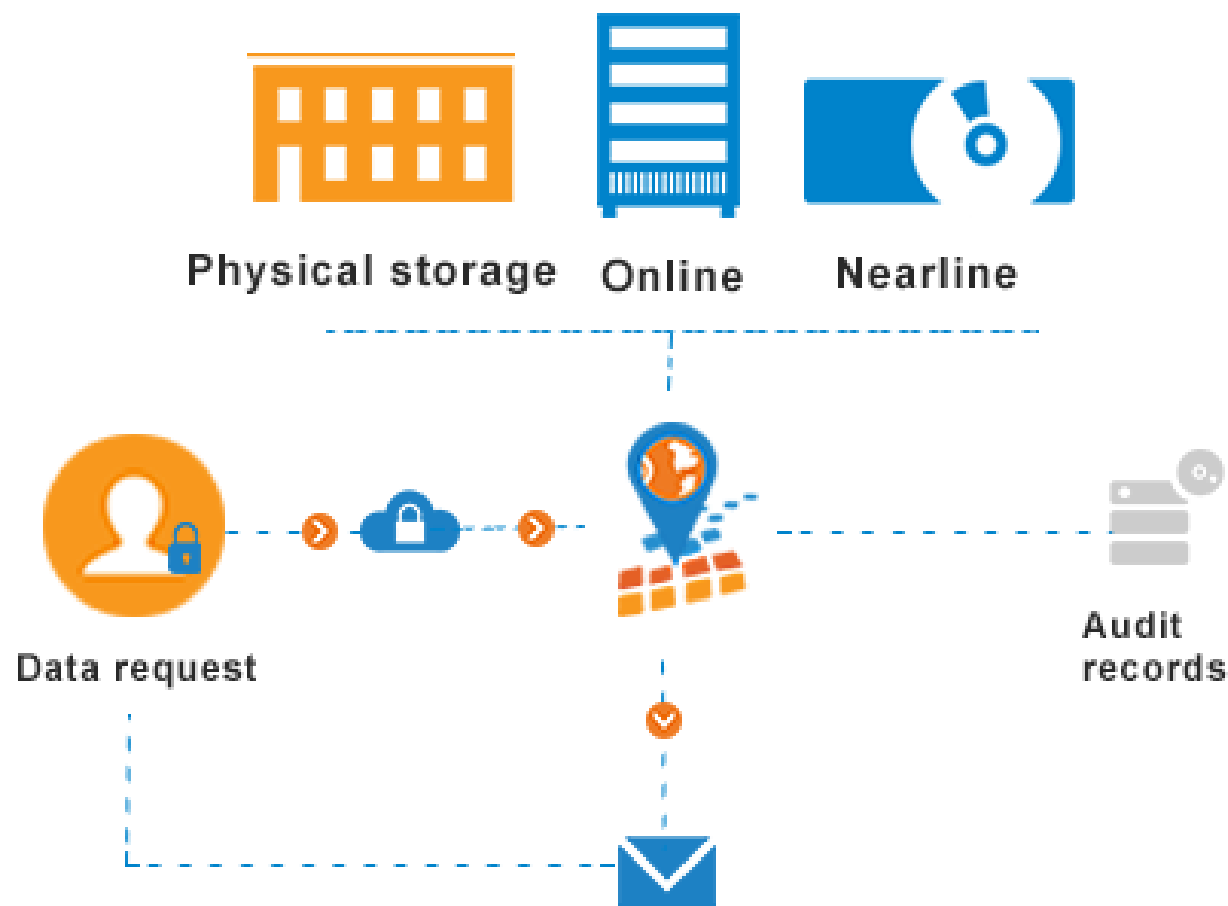
- Introduction
- Delivering data to the user – a brief history
- Moving to the internet age
- Example - MultiClient seismic data
- Where next?



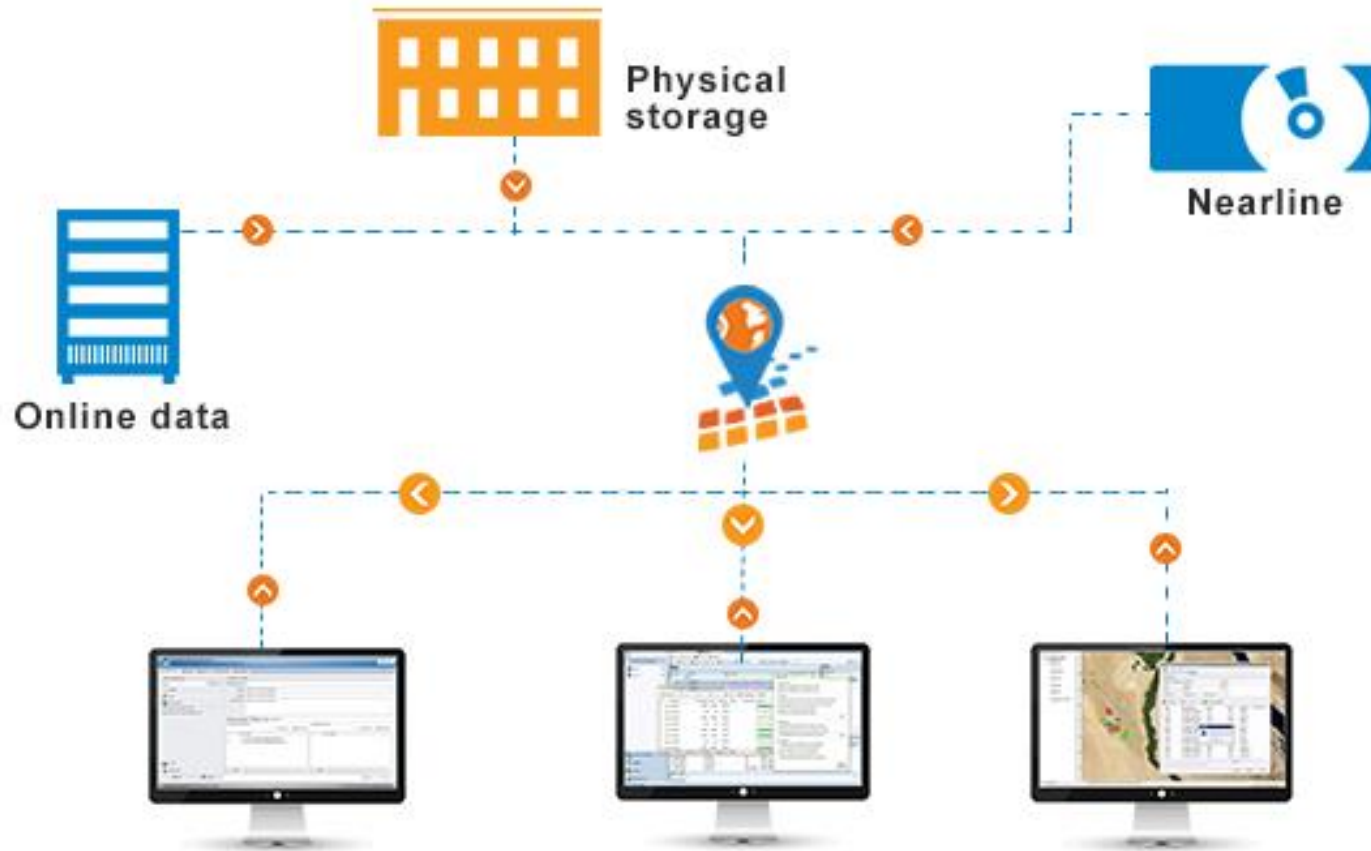
# Data loading



# Data request



# Data delivery

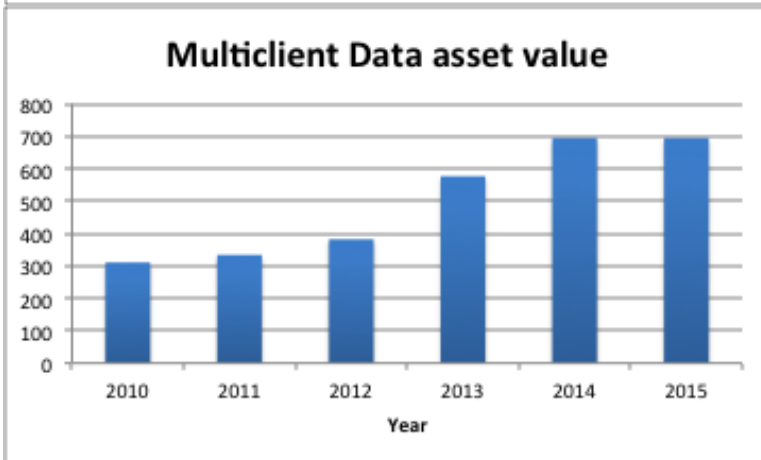
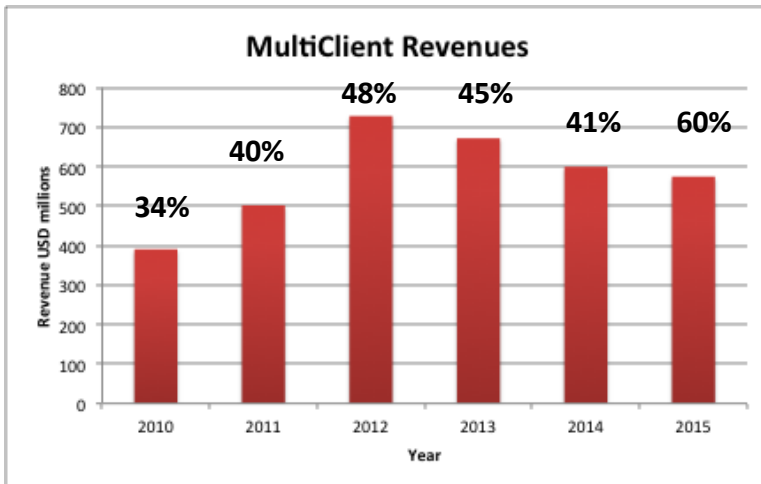


# Agenda

- Introduction
- Delivering data to the user – a brief history
- Moving to the internet age
- Example - MultiClient seismic data
- Where next?



# The statistics – PGS MultiClient



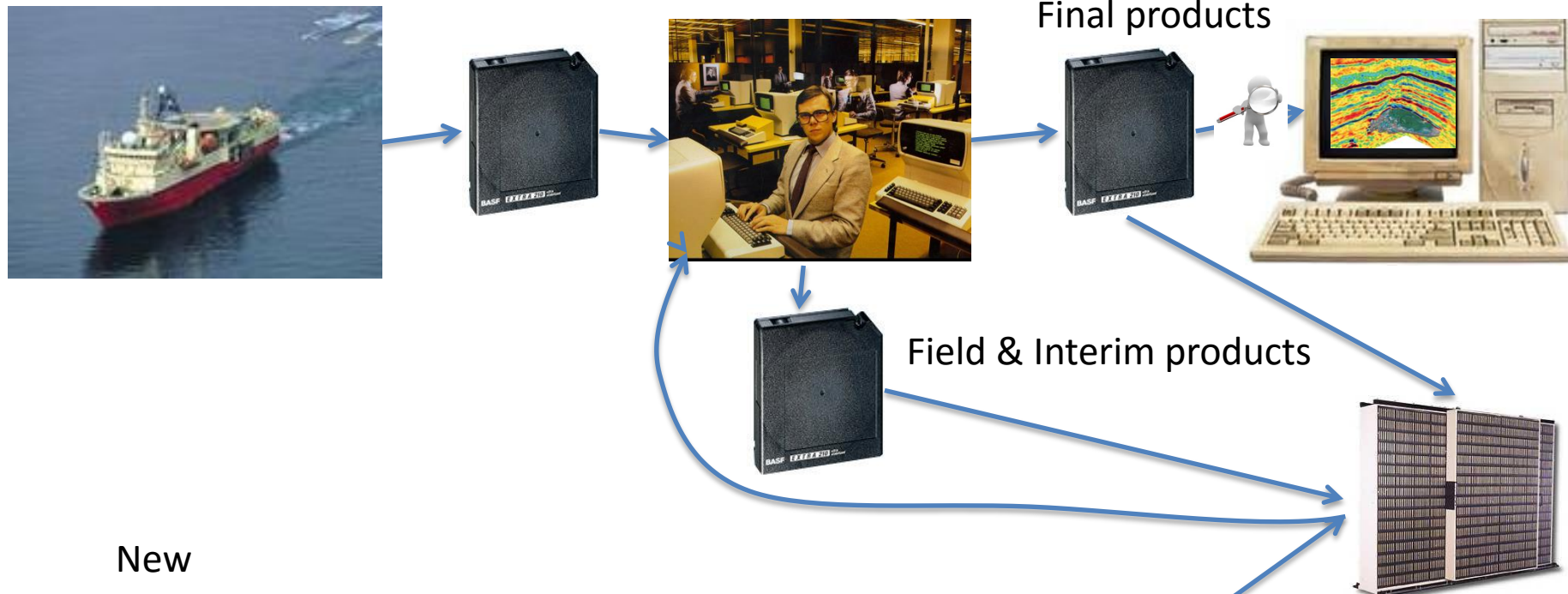
- Important Balance Sheet item
- Significant proportion of vessel time
- Significant revenues
- Huge data volumes acquired
- Long shelf life
- Shelf life “reset” with reprocessing etc
- Pre- and Post-Stack and Ancillary products all equally important for exploration purposes

# PGS MultiClient Data delivery

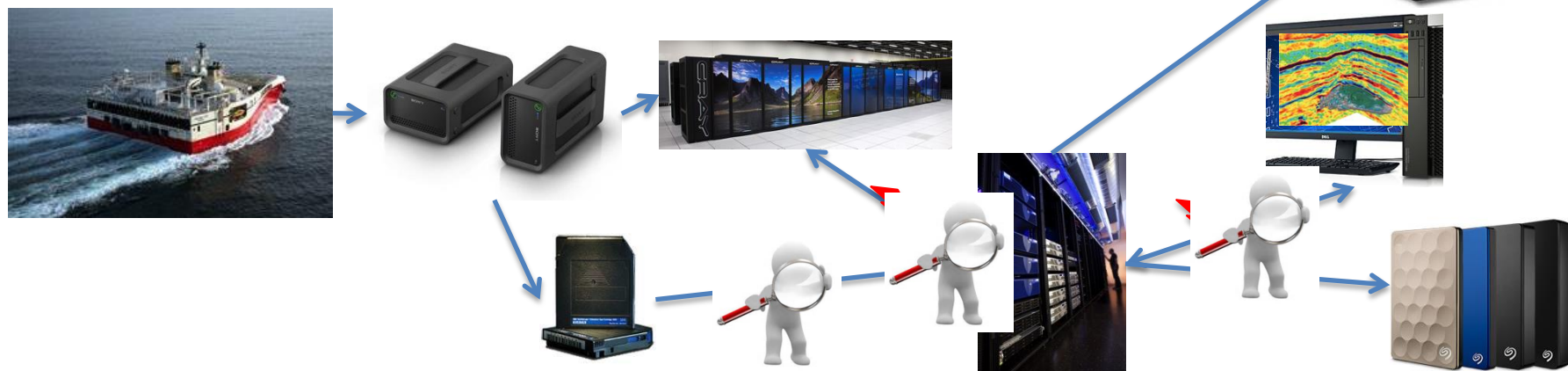
- Heritage system developed in 1990s
  - Outsourced service provision
  - Slow & restricted functionality by current standards
  - Only really handled post stack
  - Barrier to exit very high
- New system
  - Still outsourced
  - Trace handling, not processing (*sensu stricto*)
  - Handles pre and post stack data efficiently
  - Modern database integrated with IT infrastructure and other enterprise software systems

# Multiclient seismic management

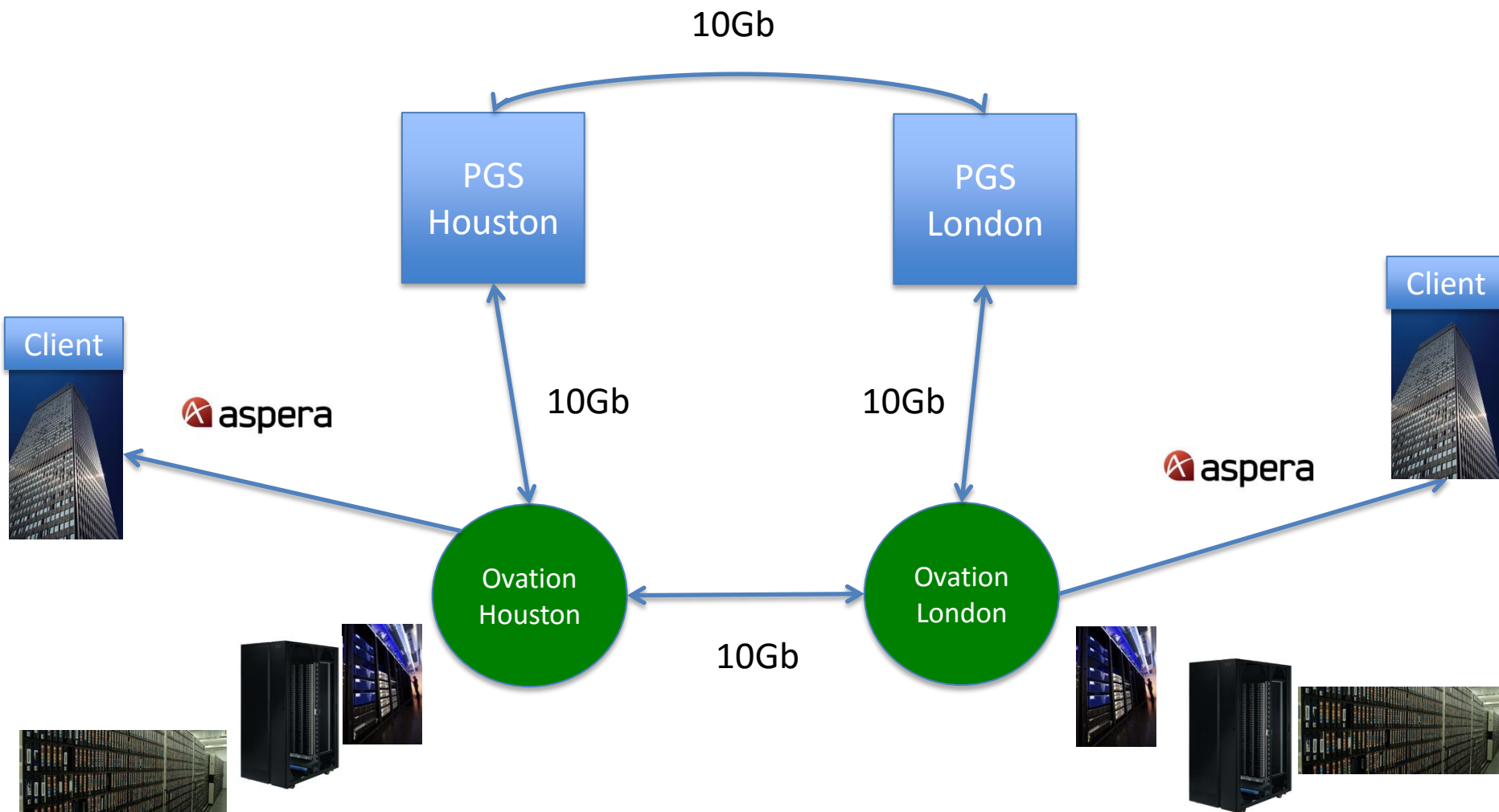
Old



New



# Ensuring availability



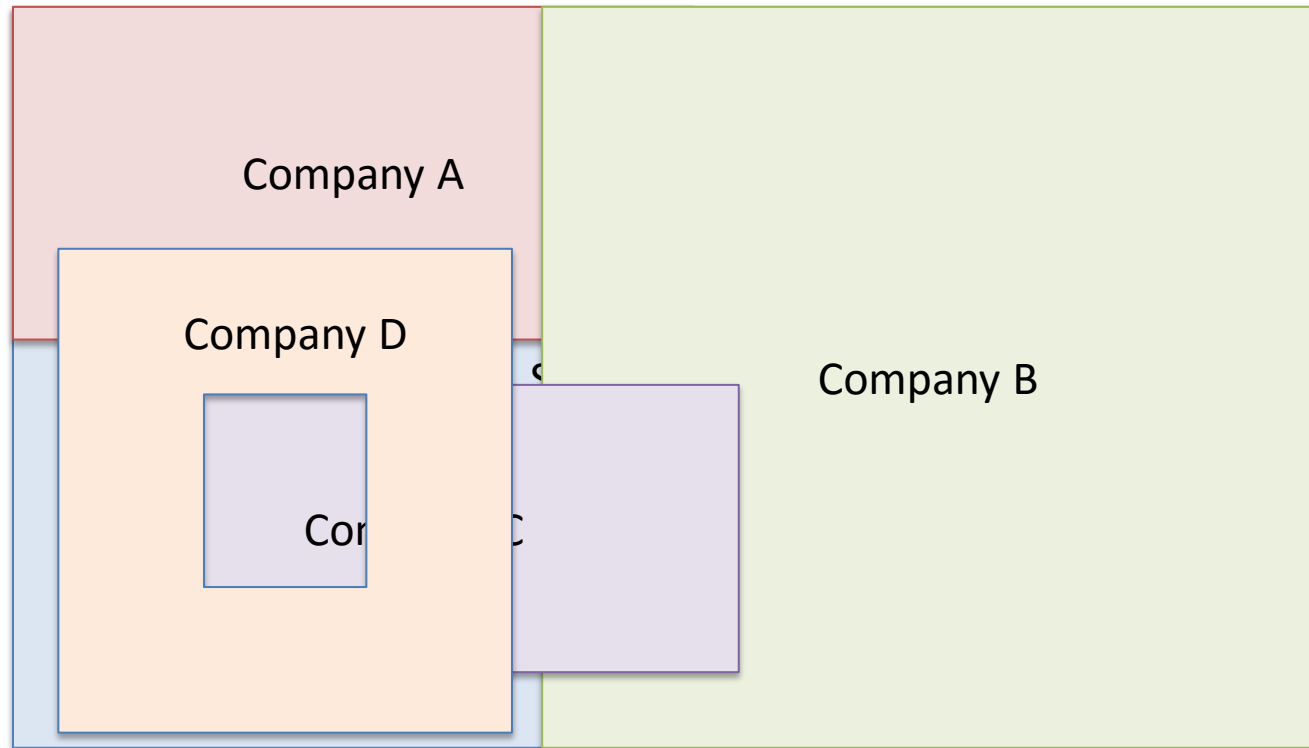


# MultiClient complications

What are they getting?

- Prestack (options)
- Stack
- Migration
- Velocities
- ...

All need cutting to  
correct coordinates

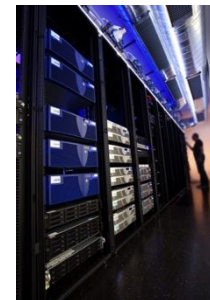


Historic  
Manual handling  
Manual intervention



Now  
Automatic

Analytics  
Parallel processing



# The impact

## Then



# Faster – Cheaper – Better

# Agenda

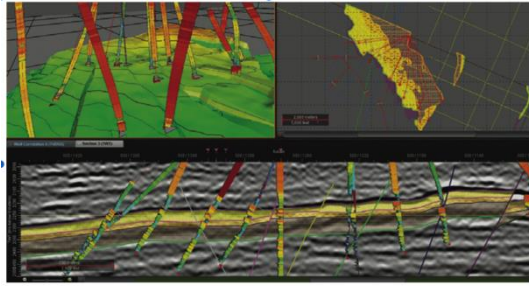
- Introduction
- Delivering data to the user – a brief history
- Moving to the internet age
- Example - MultiClient seismic data
- Where next?

# Data moving

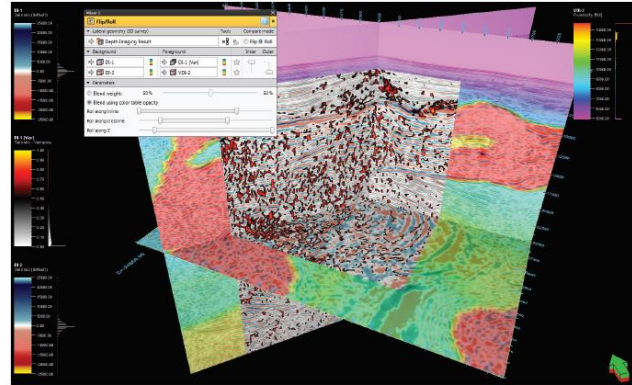




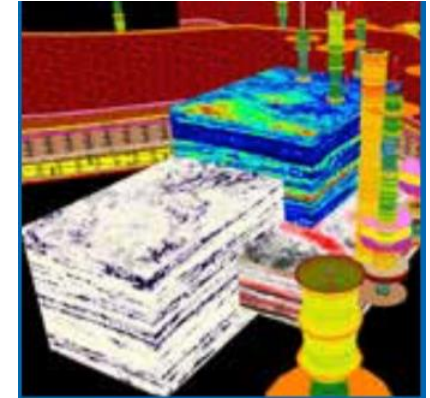
# Leave the data where it is



DecisionSpace® Geosciences 10p delivers a true interpretation environment with unprecedented integration across multi-domain workflows and data types.



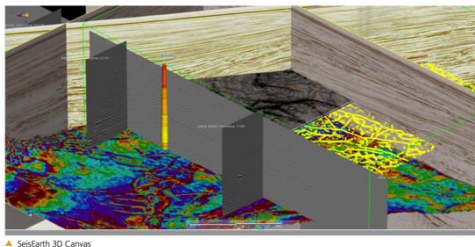
Mixer visualization capabilities include flip/roll, RGB/CMYK blending, and masking. (Data courtesy of WesternGeco)



What about bandwidth?

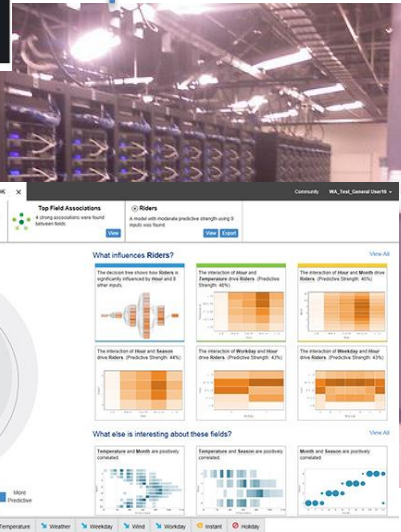
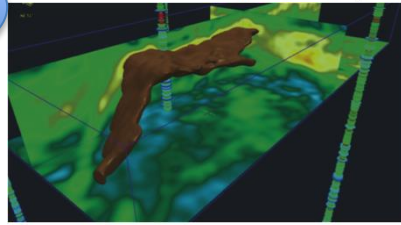
Format "A"

What about security?



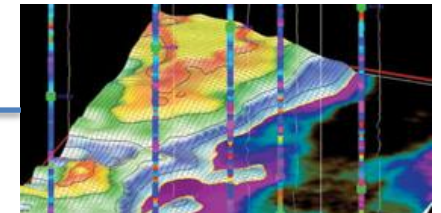
SeisEarth 3D Canvas

Format "B"



Format "C"

What about latency?



# Conclusions

- Large volumes of data can be “live” on the internet
- Still issues to tackle if it is to become a reality
- Some interpretation will be automated (rules based)
- Analytics will play a bigger part in interpretation
- It will come!

# Acknowledgements



# Thanks for your attention

Alan Smith

Luchelan Limited

[alan.smith@luchelan.com](mailto:alan.smith@luchelan.com)

+44 7768 063042